

**STAAR® 2.0**  
Item Types  
Included

**NEW!**

# Developed for GRADES 1-8+

A TEKS-driven Discovery System  
that Supports Student Learning  
and Growth through Assessment  
& Practice

 Measuring Up  
**LIVE** 2.0



- Aware
- Collaborative
- Observational
- Understanding
- Visionary
- Comprehensive
- Mindful
- Attentive
- Facilitative



## SUPPORTING EDUCATORS AND STUDENTS FOR OVER 30 YEARS

For more than 30 years, we have partnered with thousands of schools and educators, helping students reach success. We know that success happens when educators can better understand students' range of needs and build a practice that incorporates informative assessing while learning is taking place.

Empowering educators to integrate data that allows them to be aware, intuitive, and able to observe, understand, and visualize meeting the learning goal and adopting an ongoing mindfulness leads to results that produce a significant impact on learning and student academic growth.

We are committed to continue to support teachers with our research-based programs and will continue to listen to their feedback as it directly impacts our improvements, enhancements, and updates we make to *Measuring Up*.

DIAGNOSE | INSTRUCT | PRACTICE



*Measuring Up Live 2.0* delivers **innovative assessment and practice technology** designed to offer data-driven instructional support. *Measuring Up supplemental instruction* is available in print as well as eBook form.

Founded upon **EDUCATOR SUPPORT** ...

Focused on **STUDENT SUCCESS**

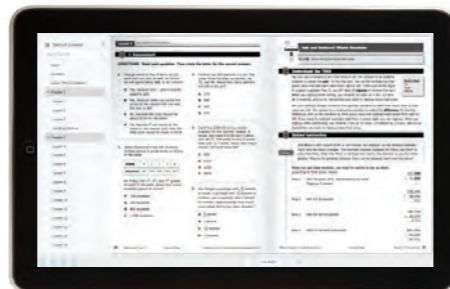
# SEAMLESS INTEGRATION, MAXIMUM RESULTS!

Measuring Up Live 2.0 comprises three separate elements seamlessly integrated to support a continuous data-driven instructional cycle. Here is how.



## INSTRUCT

EBOOK VERSION OF  
MEASURING UP WORKTEXTS




## DIAGNOSE

FOCUS & PINPOINT **ONGOING ASSESSMENT**

- |                                 |                              |
|---------------------------------|------------------------------|
| DIAGNOSTIC/<br>BENCHMARKING     | TEKS<br>PRACTICE TESTS       |
| CURRICULUM-BASED<br>ASSESSMENTS | FORMATIVE AND<br>INFORMATIVE |
| BRAIN BREAKS                    | EXIT TICKETS                 |



## PRACTICE

**DIFFERENTIATED, ADAPTIVE,  
TEKS-DRIVEN PRACTICE**

- |              |              |
|--------------|--------------|
| PERSONALIZED | FORMATIVE    |
| PRESCRIBED   | MOTIVATIONAL |

### 1. DISCOVER ... EXPLORE THE FORMATIVE AND INFORMATIVE OPTIONS

Choose an assessment or customize your own. Explore more than 67,000 available items and build a meaningful informative or formative assessment. Set parameters and assign to grade, class, group, or individual students.

### 2. REVIEW THE DATA ... EVALUATE THE RESULTS WITH REPORTING

Analyze and evaluate results with precision reporting tools and filters. Comprehensive reporting allows you to see where your students are struggling most, so you can offer constructive feedback and adjust instruction.

### 3. THREE INTEGRATED COMPONENTS TO DELIVER FORMATIVE AND INFORMATIVE ASSESSMENT, INSTRUCTION, & PRACTICE

# A SINGLE MANAGEMENT SYSTEM TO DRIVE INSTRUCTION

**NEW!**  
Enrollment and Rostering Options through Clever, Google Classroom, OneRoster, and ClassLink



◀ The **Educator Dashboard** features summaries of recent activities for schools or classes, opportunities for professional learning, and important data snapshots for individual classes across both *Insight* and *MyQuest*.

## QUICK ACCESS TO REAL-TIME, ACTIONABLE DATA



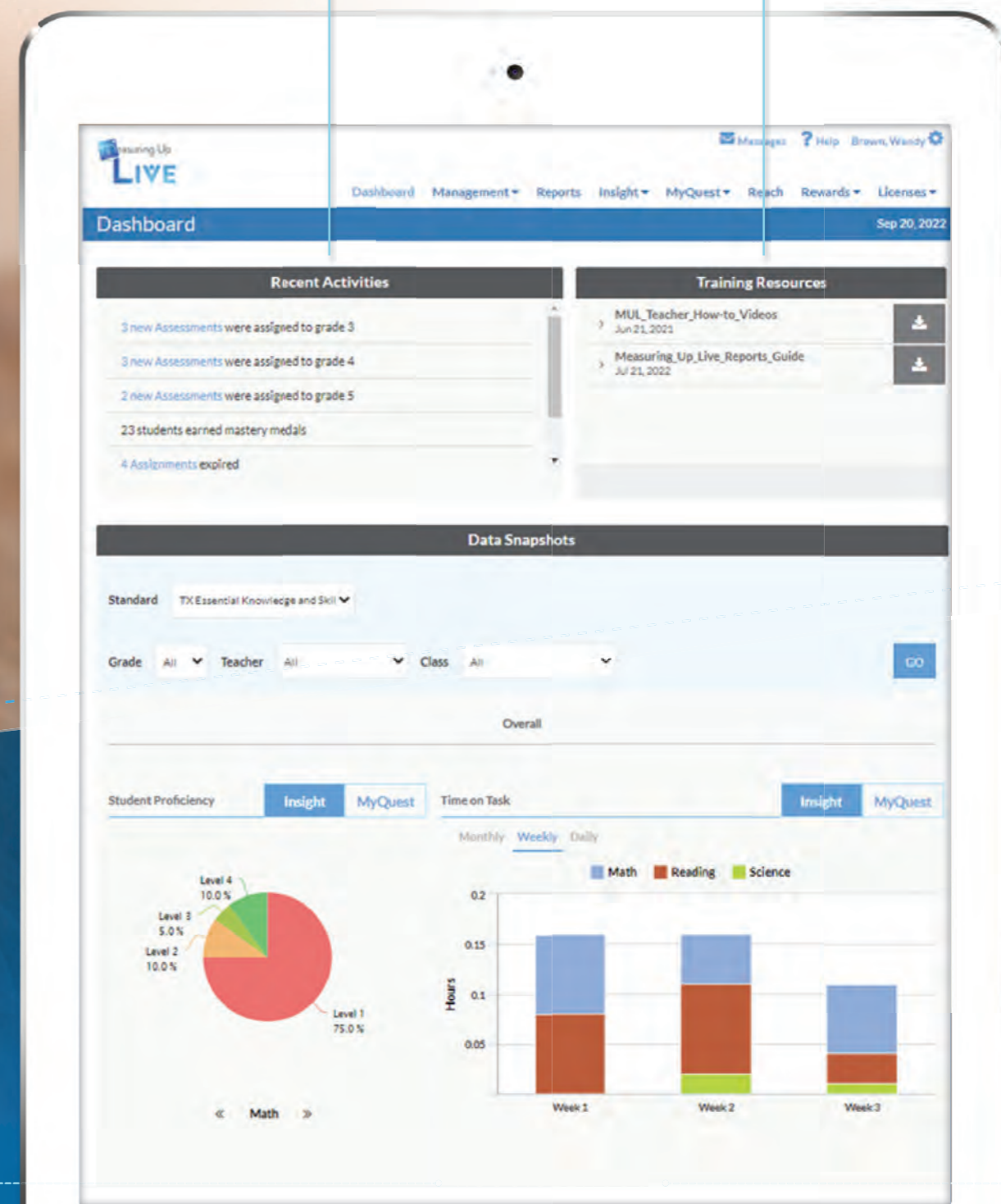
**NOTIFICATIONS**  
Daily notifications of recent activities across all classes



**TRAINING RESOURCES**  
Ongoing professional learning opportunities available to all users



**DATA SNAPSHOTS**  
At-a-glance details highlight essential performance and implementation data



With *Measuring Up Live 2.0*, educators receive unparalleled access to student performance and program implementation data. The Educator Dashboard provides a single management system where teachers and leaders can **run reports, create and assign assessments and practice, and receive ongoing support.**

# DIAGNOSE with **insight**

CHOOSE FROM ASSESSMENTS OR  
CREATE AND CUSTOMIZE TO MEET YOUR NEEDS

*Measuring Up Insight* features an easy way for you to customize assessment types, including formative, summative, and benchmark, using high-quality, TEKS-aligned items that can be filtered based on TEKS, item type, difficulty, reading passage, and cognitive level.

**CREATE**  
Filters allow you to choose questions based on TEKS, item type, difficulty, reading passage, and cognitive level.

**Question Types**

- Multiple Choice (2491)
- Multiple Select (78)
- Constructed Response (83)
- Fill In (15)
- Drag - Classify (24)
- Reorder (6)

**Bloom's Knowledge Dimension**

- Level 1 - Recall (156)
- Level 2 - Skill/Concept (386)
- Level 3 - Strategic Thinking (21)
- Level 4 - Extended Thinking (1)

**Webb's Depth Of Knowledge**

- Level 1 - Recall (156)
- Level 2 - Skill/Concept (386)
- Level 3 - Strategic Thinking (21)
- Level 4 - Extended Thinking (1)

**Question Type**

- Constructed Response [19]
- Drag - Classify [2]
- Drag - Tiling [4]
- Drop-Down [37]
- Fill In [24]
- Graph Points [0]
- Gridded Response [0]

**You can easily filter** to find paired passages and related items as well as what passages include the selected TEKS, minimizing the number of passages and maximizing the related items.

**ASSIGN**  
From the *Insight* Assessment Library, you can save, review, and modify available and customized assessments as well as assign to classes, groups, or individuals.

When assigning an assessment you can determine the testing window, include constructive feedback, and generate *Insight* prescribed practice in *MyQuest*.

**Assessment Library**

Standards: TX Essential Knowledge and Skills

Grade: Grades Subject: Reading

Created by: All

Assessment Type: All

Sort by: Assessment

Assessment	Created by	Created on	Item and Points	Average Difficulty	Action
TX 5 Reading Building Blocks 1	Mastery Education Quality Assessments (Formative Practice Assessments)		22 Items 22 Points	276	
TX 5 Reading Building Blocks 2	Mastery Education Quality Assessments (Formative Practice Assessments)		21 Items 21 Points	285	
TX 5 Reading Building Blocks 3	Mastery Education Quality Assessments (Formative Practice Assessments)		22 Items 22 Points	322	

**Details**

**During Assessment**

- Randomize Question Order  
Show questions in a random order for each student.
- Show Feedback  
Show students feedback after their first attempt of each question.

**Upon Completion of Assessment**

- Hide Answers in Students' P3®  
Withhold questions and answers in students' Personal Prescriptive Path® (P3) reports for the selected duration.  
For: 90 Days
- Hide Score  
Don't show the final score to students on completion of the assessment.
- Generate Insight Prescribed Quest  
Based on *Insight* Assessment performance, a personalized, adaptive learning path will be generated in *MyQuest* for each individual student.

## CHOOSE FROM 19 DIFFERENT ITEM TYPES:

- |                 |                     |                    |                               |
|-----------------|---------------------|--------------------|-------------------------------|
| MULTIPLE CHOICE | EDITING TASK CHOICE | NUMBER LINE POINTS | YES/NO                        |
| MULTIPLE SELECT | MULTIPART/EBSR      | REORDER            | TRUE/FALSE                    |
| DRAG-CLASSIFY   | FILL IN             | SELECT OBJECTS     | SHORT CONSTRUCTED RESPONSE    |
| DRAG-TILING     | GRAPH POINTS        | SELECT TEXT        | EXTENDED CONSTRUCTED RESPONSE |
| EDITING TASK    | GRIDDED RESPONSE    | TABLE MATCH        |                               |

# measuring Up insight STUDENT EXPERIENCE

Measuring Up Insight is designed to deliver students a customized experience based on what they can expect to see on the new TX state assessment. The delivery of each Insight assessment will mimic the look, feel, and tools on the new STAAR® 2.0. This practice allows students to go into their exam with the confidence they need to focus on the content rather than the technology of the test.

## TOOLS

The interface is designed to allow students to experience using the tools that they will see on the STAAR® 2.0.

9

The table shows information about Emily's two jobs.

Job	Salary	Minimum Hours
Lifeguard	\$11 per hour	at least 5 per week
Store Clerk	\$9 per hour	at least 8.25 per week

Last week, Emily worked as a store clerk for 12.25 hours. How much did Emily earn from her work as a store clerk?

7

**Mesoamerica in Color**  
by Christopher Beekman  
Let's take a good look at 'Indian corn'!

Paragraph 2 includes the word conquistador, which is related to the English verb phrase to conquer. What is the suffix *ador* create?

(A) Another verb  
(B) An adjective  
(C) A noun  
(D) An adverb

4

Match the points to the line equations.

Line Equations	(-1, 5) (3, -3)	(1, 6) (4, 12)	(-3, 4) (3, -14)
$-4x + 2y = 8$	<input type="checkbox"/>	<input type="checkbox"/>	<input type="checkbox"/>
$6x + 3y = 9$	<input type="checkbox"/>	<input type="checkbox"/>	<input type="checkbox"/>
$9x + 3y = -15$	<input type="checkbox"/>	<input type="checkbox"/>	<input type="checkbox"/>

## AUTHENTIC EXPERIENCE

Your students will have an interface that resembles the STAAR® 2.0, providing them an authentic experience with the interface and item types that will be on the STAAR® 2.0.

9

Which of the following are undergoing chemical changes?

Select **THREE** correct answers.

melting ice cube      melting butter

rusting nail      burning log

boiling water      baking bread

## CUSTOMIZE STUDENT ACCESSIBILITY TOOLS

Turned on at the student level, Text-to-Speech/Translation, Line Reader, Font Size, Color Contrast and Magnifier tools are available for those who need them.

2

with blue and yellow. They crack nuts with their strong beaks, enjoying a meal in the sunlight.

8 Butterflies flutter in and out of the branches, looking like flowers dancing in a gentle breeze. Their bright shades of orange, blue, purple, and yellow shine brilliantly against the dark green leaves of the forest.

9 When the sun starts to set, the rain forest comes alive with different sounds. Flocks of birds and parrots fly screaming to their roosts. Crickets and katydids chirp their evening song. A rustling noise begins in the leaves and plants near the ground. Mice, lizards, opossums, and many other creatures move along the rain forest floor.

10 The day creatures go to sleep, and the nocturnal ones start their nightly prowls. A sunny day in the rain forest fades into the night. Drip, drip, drip.

What is the meaning of *nocturnal* in paragraph 10?

(A) Active at night  
(B) Daytime

- Tutorial
- Notepad
- Mark for Review
- Reset Highlighting
- Strikethrough
- Speak Question
- Speak Question and options
- Speak Options

PROVIDE STUDENTS WITH A FAMILIAR ASSESSMENT EXPERIENCE

# PRACTICE with myQuest

## PERSONALIZED, ADOPTIVE EXPERIENCE FOR EACH STUDENT

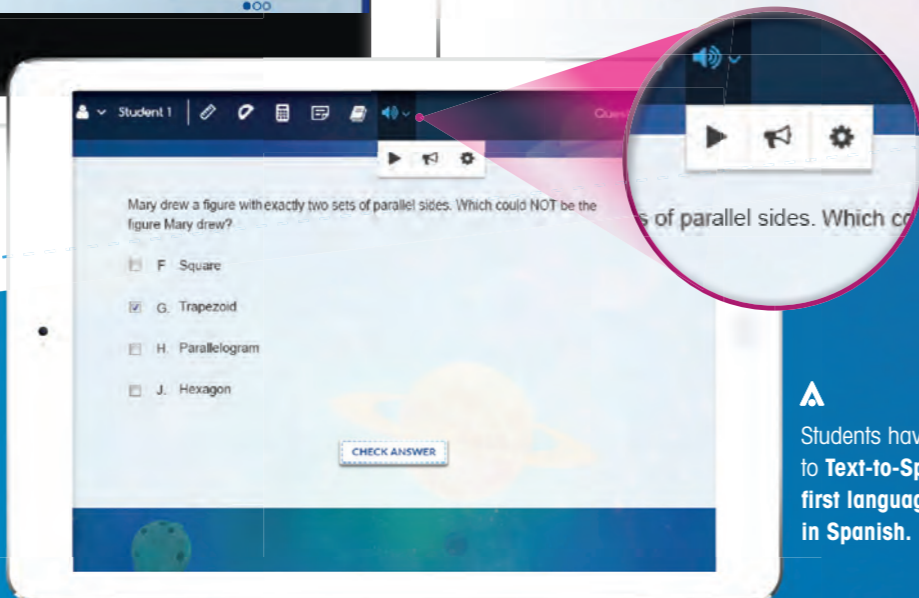
## TARGET THE NEEDS OF EVERY STUDENT

Measuring Up MyQuest features adaptive practice designed to help you target instruction and meet all students at their exact proficiency level. You receive detailed, student-specific information that helps you understand where each student is tracking.

With adaptive technology, students are met at their own level and work at their own pace with practice that is TEKS-driven. During their practice, students will receive tips and guidance if an incorrect answer was chosen and reinforcement when a correct answer is chosen. Students cannot skip a question and must find the correct answer in order to move forward. With two ways to practice, students can be prescribed based on their *Insight* performance or you can activate TEKS.

**INSIGHT PRESCRIBED**  
Students are prescribed individualized practice based on their *Insight* assessment results.

**TEACHER ACTIVATED**  
You can activate TEKS by class, group, or individual student. You have access to the full set of TEKS at each grade level and can easily activate or deactivate TEKS as needed.

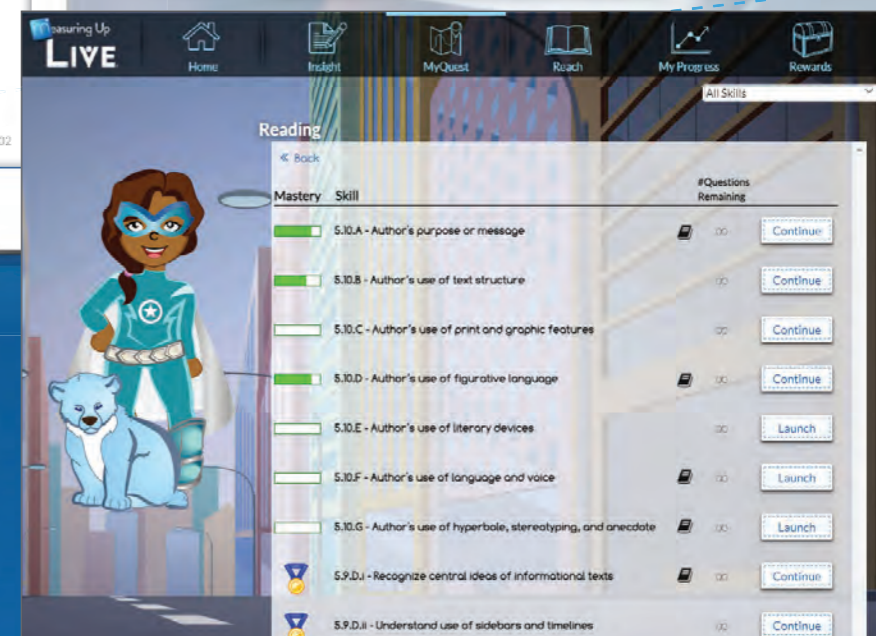


▲ Within *MyQuest*, students take ownership of their learning by choosing their mode of practice with a **Quiz** or **Game Mode**. You control the settings and game mode.

▲ Students have access to **Text-to-Speech** and **first language support in Spanish**.

▲ You have the ability to see how students level up or down within the program. You can also analyze what challenges students may be having by examining their individual responses.

▶ Students can quickly see the full list of which TEKS have been assigned (from *Insight* assessment or by you) and launch those TEKS that are still active. Students can visually track how close they are to reaching mastery from the green progress bar and what TEKS are completed, as well as which ones have earned a mastery medal.

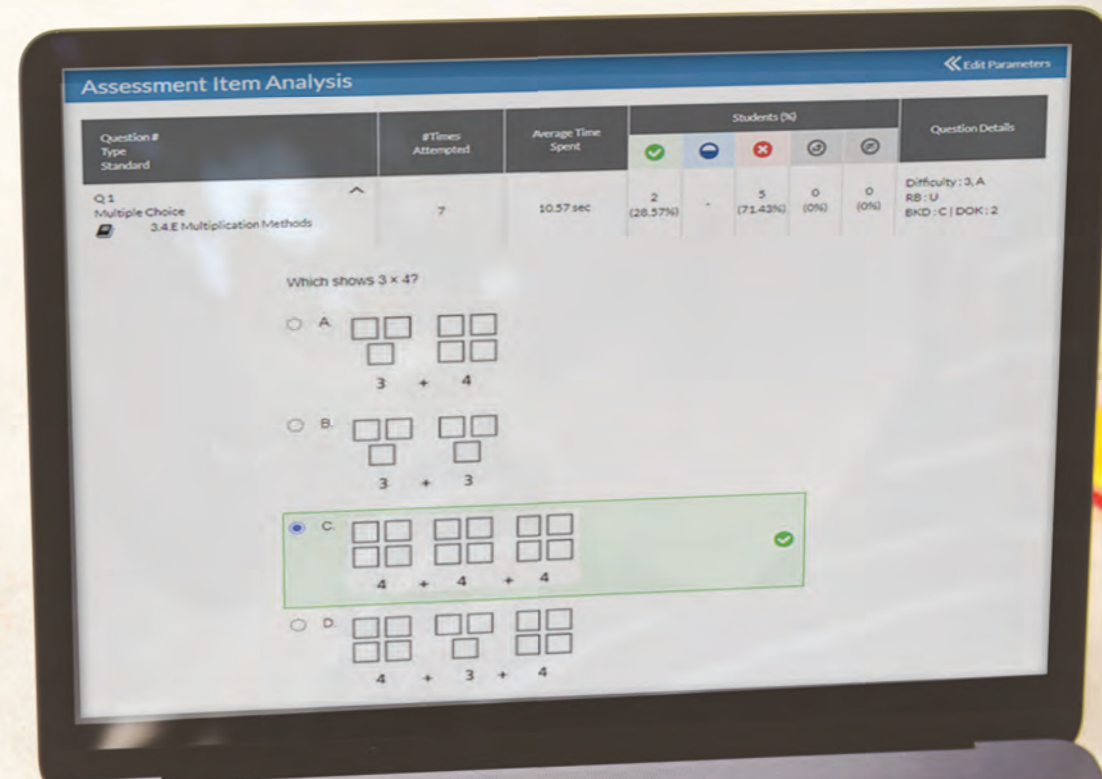


# ACCESS TO MEANINGFUL DATA THAT IS ACTIONABLE

With *Measuring Up Live 2.0* analytics, you can access real-time, actionable data to drive TEKS-based instruction, group students, and connect with families. Clear, concise reporting allows all stakeholders to have a pulse on student performance at the TEKS, sub-learning, and specific question level.

## ASSESSMENT ITEM ANALYSIS

You can easily check the difficulty level of each test or item and will be able to understand how each student performs through detailed analyses of his or her responses.



## MEASURE PERFORMANCE

The **Growth Report** shows results over time according to each TEKS strand. This report can be generated using specific TEKS from specific tests.

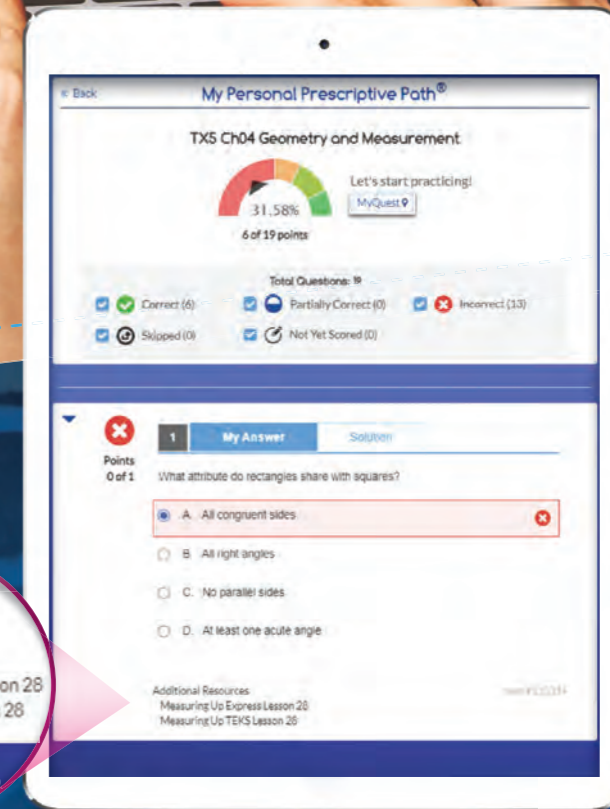


Standard	Avg Score	L1	L2	L3	L4
Math (Overall)	41.16%	6	5	0	0
1 Mathematical processes	64.29%	3	4	0	7
2 Place value	19.72%	11	0	3	0
2.A Write decimals through the thousandths	20.69%	0	0	0	4
2.B Compare and order two decimals	30.43%	1	1	4	0
2.C Round decimals	5.26%	0	0	0	1
3 Computations	62.96%	6	6	5	0
3.A Use estimation to find solutions	80.00%	0	0	0	11

The **Standards Proficiency** report shows how a student performed on an entire test, by strand and individual student expectation. Pinpoint which lessons to target in *Measuring Up Reach* per class, group, or individual student.

## MY PERSONAL PRESCRIPTIVE PATH® (P<sup>3</sup>)

From the *My Personal Prescriptive Path*, your students can review their assessment results, embark on a personalized adaptive TEKS-based practice via *MyQuest*, or view which *Measuring Up Reach* worktext lessons will provide additional instruction and practice for that skill.



At least one  
Additional Resources  
Measuring Up Express Lesson 28  
Measuring Up TEKS Lesson 28





measuring Up **reach**

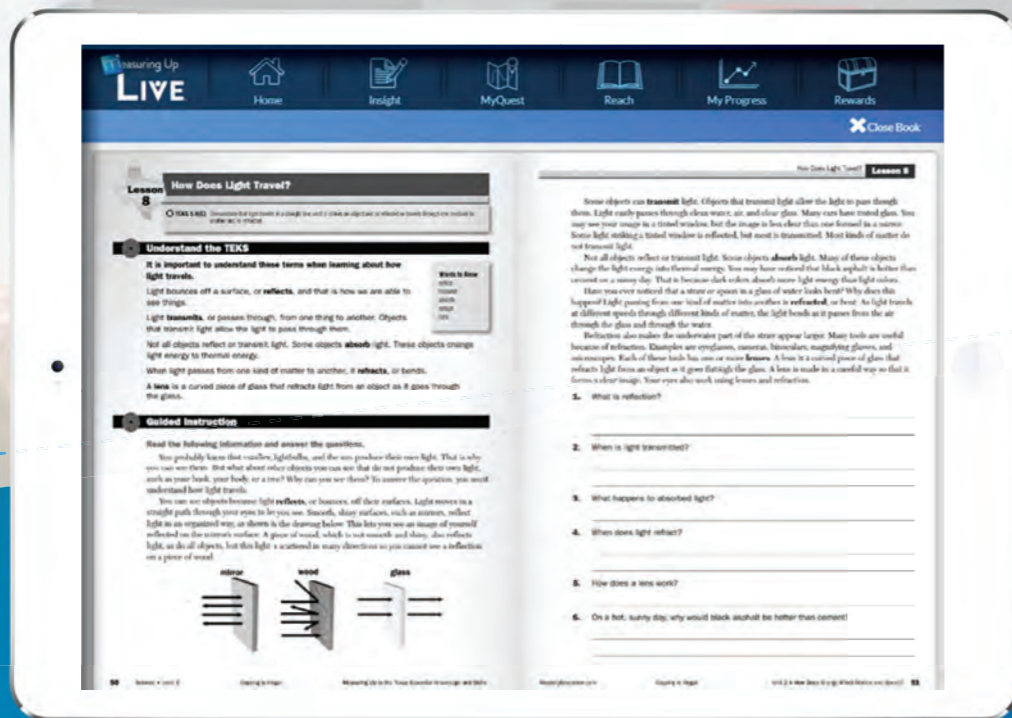
INSTRUCT with

PERSONALIZED INSTRUCTION

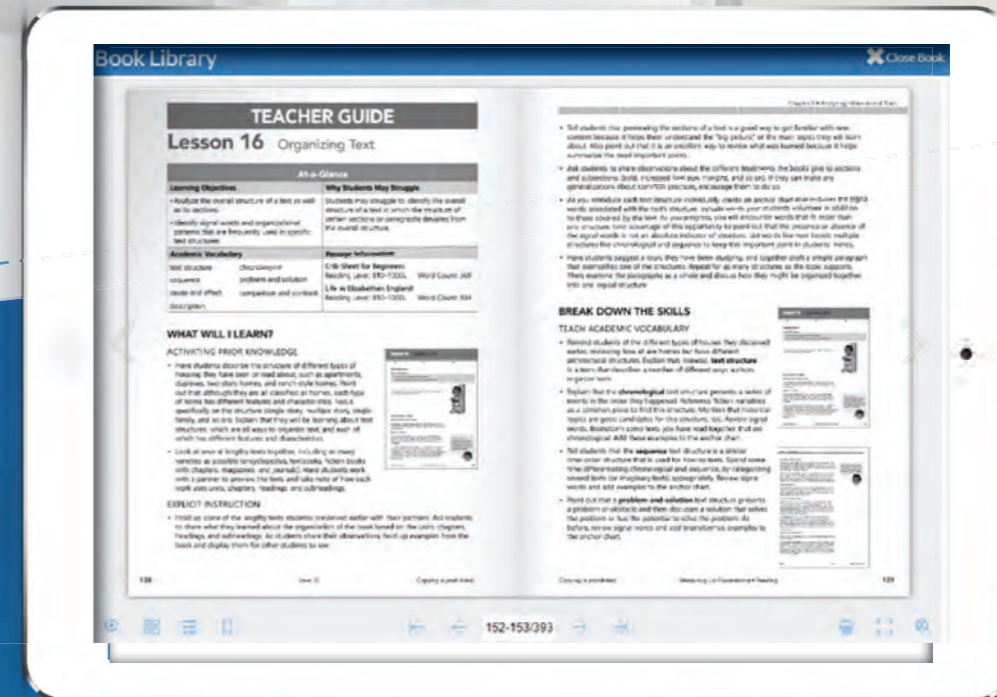
Reach eBooks provide universal access to all *Measuring Up* lessons in one place. The digital format is easy to access and use for both students and teachers. Online subscriptions allow students to work from anywhere there is an internet connection. Students can work at their own pace or as part of a collaborative lesson.

## INSTRUCTION IN THE PALM OF YOUR HAND

The digital format allows teachers to use *Measuring Up* lessons flexibly. Project lessons for whole or small group instruction. Have students send their lesson answers to you through the *Measuring Up Live 2.0* messaging platform. Many implementation options are available.



Complete electronic version of your favorite *Measuring Up* lessons.



Instant access to support for differentiation.

# MOTIVATE STUDENTS TO TAKE THE LEAD ON LEARNING!

## SNAPSHOTS TO CAPTIVATE YOUR STUDENTS



**REACH EBOOKS**  
Move forward and keep learning with instant access to *Measuring Up* lessons.



**DEEP INSIGHT**  
Students stay on track with assessment due dates and get an at-a-glance view of their most recent assessments.



**MYQUEST DATA**  
Through *MyQuest*, your students monitor their own progress, become self-motivated, and continue to challenge themselves.



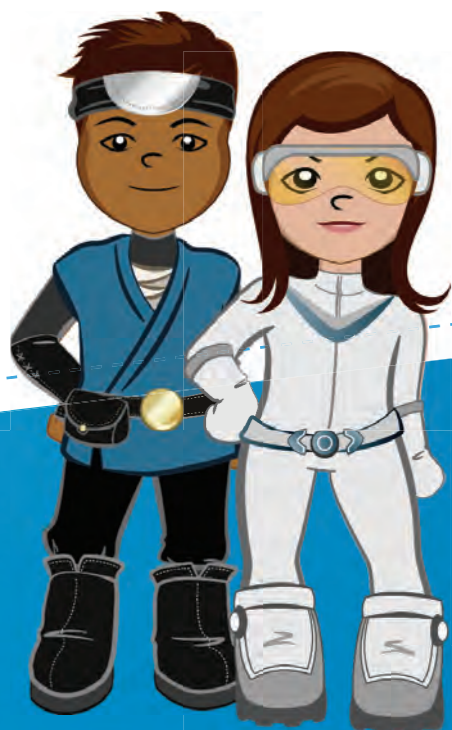
*Measuring Up Live 2.0* provides students with a dashboard that highlights the **skills on which they need to focus and the assignments they need to complete**. When students can see their achievements and witness their own success firsthand, they are **motivated to take ownership of their personal path to mastery**.

# STUDENTS DECIDE WHAT SUCCESS LOOKS LIKE!

Providing your students with access to their own performance data and insight into their individual learning goals lets them become active partners in the learning process. To further personalize learning, build accountability, and motivate themselves, students can create an avatar, earn tokens and medals, monitor the leaderboard, and track their own progress.

➤ Through the My Progress tab, students can view the number of TEKS they've mastered, as well as other encouraging results in real time.

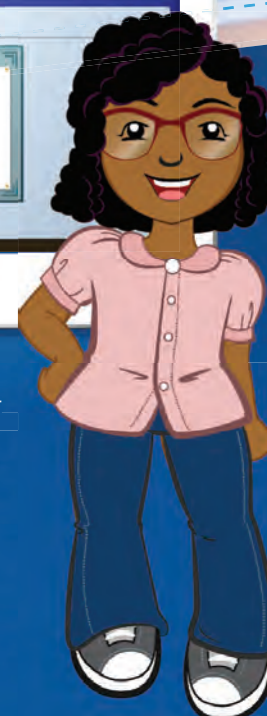
Progress	Topic	Time on Topic	Questions Answered	Avg. Time Per Question	Lesson
Place value					
🏆	Write decimals through...	00:06:22	24	00:00:15	
🏆	Compare and order two...	00:03:01	11	00:00:16	
🏆	Classify two-dimensional...	00:02:51	11	00:00:15	
Understand, recognize...					
🏆	Find volume using unit...	00:01:03	4	00:00:15	



Rank	Student Name	Student ID	Top Score
1	Joyce A.	100001178	77
2	Student F.	FF00058	66
3	Sandra A.	100001826	10
4	Alden A.	100000933	5

➤ Students can see how well they are doing in their game compared to their class, school, district, and state. This feature can build some healthy competition among classes in one school or across a district.

➤ Students get to personalize their very own avatar within a built-in rewards system. Children have the ability to earn tokens, medals, and badges; receive teacher-generated certificates; and play games in MyQuest.





Measures for Learning . . .  
Features and Functions



Purpose
Summative and formative assessments
Benchmarks
Pre-/Post- units of study
Classroom tests/Quizzes
Brain booster/Question of the day
Exit tickets
Teacher/Student conference
Differentiated support
Personalized, differentiated practice
High-quality supplemental instruction
Real-Time Actionable Data
Monitor progress
Inform instructional planning
Document evidence of learning
Inform instruction
Communicate from school to home
Hold students accountable through self-regulation
View leading indicators
Features
Single Management System
Roster/SSO with Clever, ClassLink, Google Classroom, and/or OneRoster API & CSV
Access simplified class roster management with the data import feature
Create subgroups
Insight Assessments
Available formative & summative assessments with state practice tests
Ability to create your own assessments using our standards-based item bank; for ELA—identify paired passages; filter by passages with most/all standards selected
Authentic student experience with user interface that reflects the STAAR®
19 different item types
Auto-generated prescriptive learning path to MyQuest based on students' performance you can turn on and off
Tools (answer eliminator, calculators, protractor, rulers, text to speech, Spanish translator)
MyQuest Personalized Learning Path
Insight-driven or teacher-activated standards
Multi-TEKS practice
Control number of questions; practice continues after mastery
Variety of item types—all scored by system
Reach
All Measuring Up worktexts in eBook with high-quality, supplemental instruction
Student Motivation System
Monitor learning
Earn an avatar, tokens, badges, and certificates
Play MyQuest games and view the leaderboard
20th-century test-taking strategies and skills/21st-century skills for students

# Measuring Up PROFESSIONAL DEVELOPMENT SUPPORT AND IMPLEMENTATION

*Measuring Up's* Professional Development was designed by educators, for educators. Rigorous assessment and instruction are at the heart of student success. Customized Professional Development sessions support educators with best practices and strategies when using *Measuring Up Live 2.0*. One functionality webinar is available with purchase. In-person functionality training is available for a fee. Speak to your sales rep.

## CREATING MEANINGFUL ASSESSMENTS

Through best practices, educators learn impactful ways assessments can inform instructional decisions to help monitor student progress.

## USING DATA TO DRIVE INSTRUCTION

The focus will be to learn how to effectively build assessments and gather data to inform classroom instruction through the planning and designing of lessons and creating a data cycle.

## DIFFERENTIATED INSTRUCTION

Educators will apply a variety of instructional strategies to support active learning for all students. This will include the ability to diagnose and differentiate instruction as well as individualizing practice with curriculum compacting to adjust instruction.

"Once a teacher generates an intentional assessment, the reality of planning a rigorous lesson and delivering explicit instruction begins . . . **these sessions ensure educators have all the tools and best practices** to effectively implement *Measuring Up Live 2.0* and build standards mastery."

Dr. Kathy W. Dames, Educational Consultant

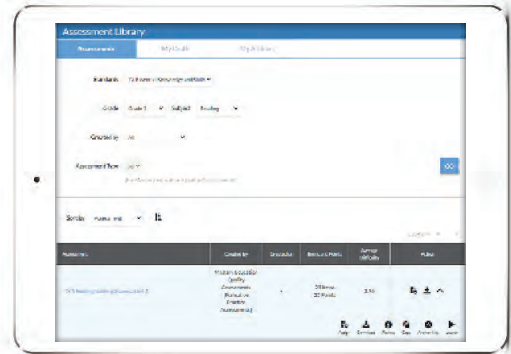
# BLENDED SOLUTION

## That Supports Any Classroom Curriculum

Mastery Education's **Measuring Up** suite of print and digital programs includes everything you need to maximize student success. **Measuring Up** provides ongoing assessment, personalized practice, and targeted TEKS-driven instruction. **Measuring Up** supports learning and academic growth.

DIAGNOSE  
**measuring Up**  
**insight.**

Available for purchase separately.



INSTRUCT

**measuring Up**

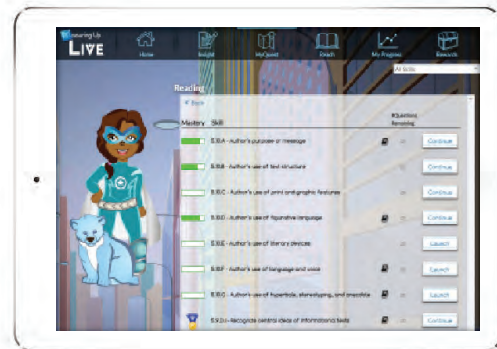
**measuring Up**  
**reach.**



PRACTICE

**measuring Up**  
**myQuest**

Available for purchase separately.



For more information,  
call 1.800.822.1080 or visit [masteryeducation.com](http://masteryeducation.com)



978-1-64090-950-2